

Hydro-Blade

ATTACHMENT TOOL



www.timbucktoomfg.com

(310) 323-1134

Designed to quickly clean and maintain any hard surface, such as V.C.T. and tile floors with or without grout joints, granite, marble, concrete, cement, irregular surfaces, and a lot more.

P1

Manufacturer of Commercial & Environmental Cleaning Equipment

Since 1974

© 2018 TIMBUCKTOO MFG, INC.



CATEGORY # 2

Specifications: (HB-2519A-SQW)

Features

Rotationally molded polyethylene and stainless steel body

Pump rated from 100 to 5000 PSI

(2) Stainless steel jets

Stainless steel with ceramic rotation fittings

Comfortable pistol grips on handle assembly
(the grips provide ease when working long hours)

(4) multi-directional outdoor and uneven surface wheels

Bristle skirts and squeegee blades with 360° angle

Limited warranty 3 years on poly body,
1 year parts and 90 days labor

Power

120 Volt AC/ 1.3 Amps max

(1) 50' 18/3 Gauge power cord

Options:

Without motor

Dimensions

Overall height: 46"

Base width oval: 22" x 19" to 25" x 19"
(with squeegee wings)

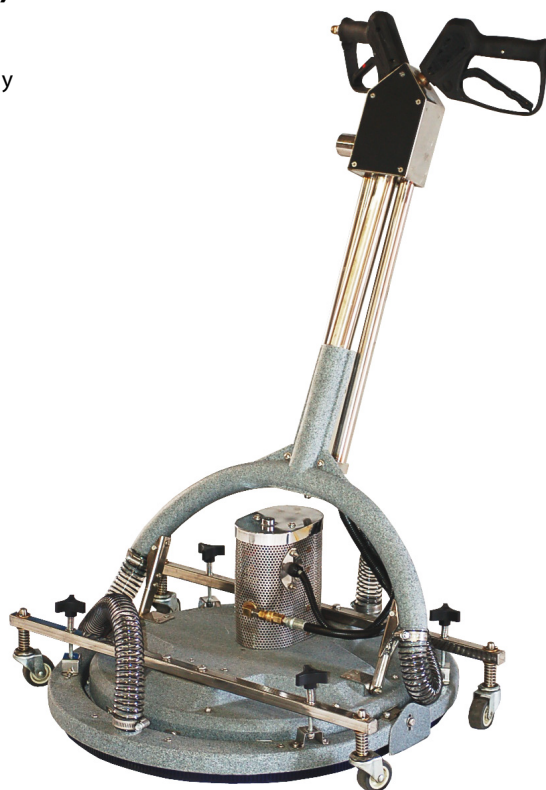
Base height: 5-3/4"

Shipping weight

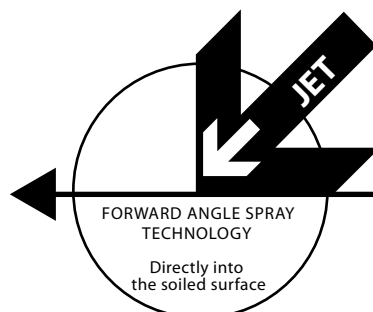
55 lb +

Standard colors

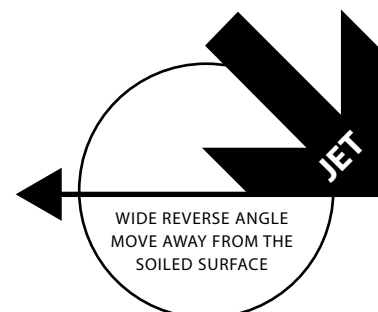
Grey granite



Bottom view of
Hydro-Blade



TMI'S
F.A.S.T. TECHNOLOGY



other

CAUTION: Do not use flammable and volatile material.

SPECIFICATIONS, FEATURES, ILLUSTRATIONS AND EQUIPMENT SHOWN IN THE CATALOG ARE BASED UPON THE LATEST INFORMATION AT THE TIME OF PUBLICATION. ALTHOUGH DESCRIPTIONS ARE BELIEVED TO BE CORRECT AT THE TIME OF PUBLICATION, SPECIFICATIONS, ACCESSORIES, COLOR, MATERIAL, MODELS AND IMPROVEMENTS ARE SUBJECT TO CHANGE WITHOUT NOTICE. LIMITED WARRANTIES: SEE OWNERS MANUAL. ORDINARY MAINTENANCE ITEMS OR ADJUSTMENTS, PARTS SUBJECT TO NORMAL WEAR, AND OTHER CERTAIN ITEMS ARE EXCLUDED FROM WARRANTY. PROPOSITION 65 WARNING: THIS PRODUCT CONTAINS CHEMICALS KNOWN TO THE STATE OF CALIFORNIA TO CAUSE CANCER, BIRTH DEFECTS OR OTHER REPRODUCTIVE HARM. PROPOSITION 65 ADVERTENCIA: Este producto contiene sustancias químicas conocidas por el estado de California como causantes de cáncer, anomalías congénitas y otros daños reproductivos.

Hydro-Blade

ATTACHMENT TOOL



P2

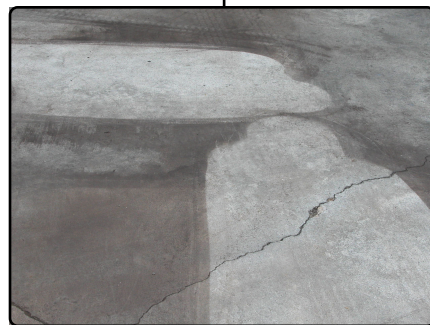
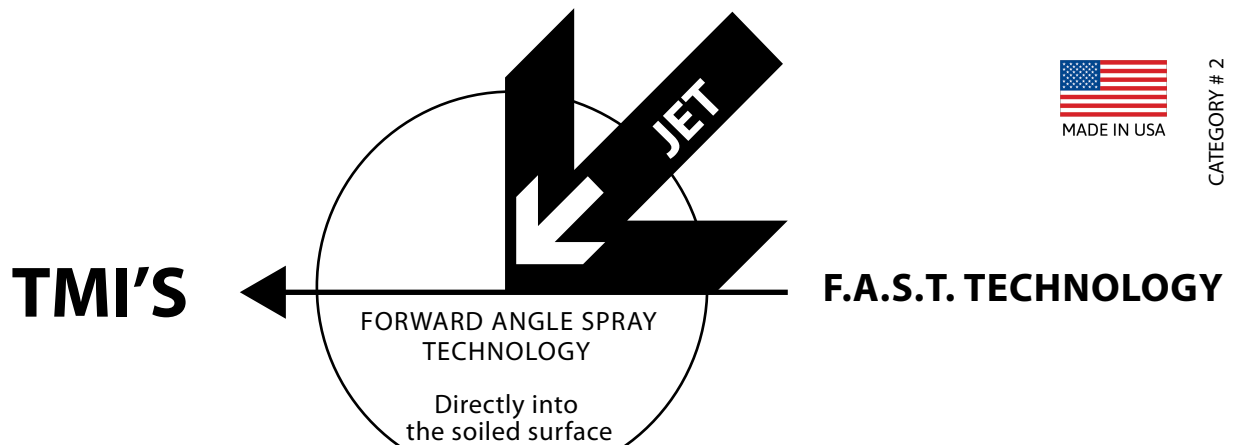
Manufacturer of Commercial & Environmental Cleaning Equipment

Since 1974

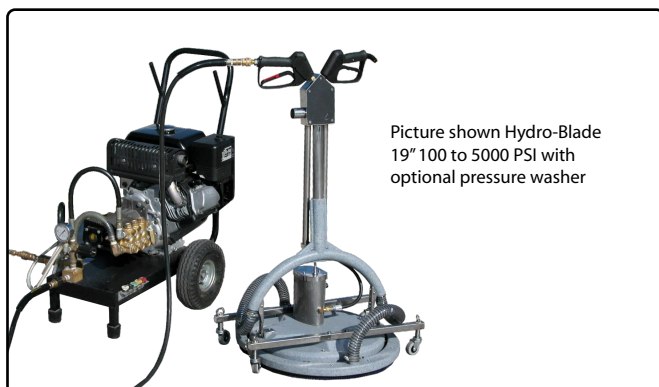
© 2018 TIMBUCKTOO MFG, INC.



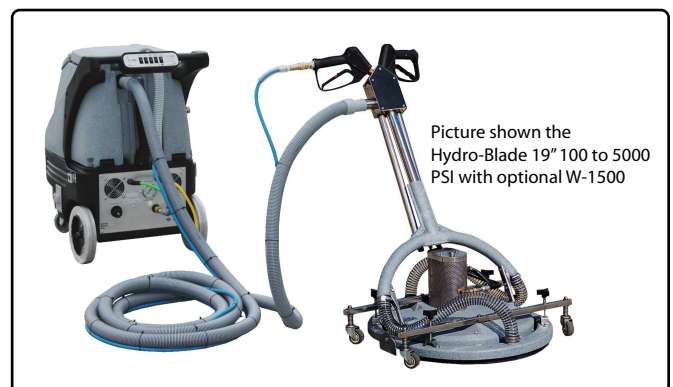
CATEGORY # 2



Picture shown clean areas after using Hydro-Blade in a hard surface



Picture shown Hydro-Blade 19" 100 to 5000 PSI with optional pressure washer



Picture shown the Hydro-Blade 19" 100 to 5000 PSI with optional W-1500

CAUTION: Do not use flammable and volatile material.

SPECIFICATIONS, FEATURES, ILLUSTRATIONS AND EQUIPMENT SHOWN IN THE CATALOG ARE BASED UPON THE LATEST INFORMATION AT THE TIME OF PUBLICATION. ALTHOUGH DESCRIPTIONS ARE BELIEVED TO BE CORRECT AT THE TIME OF PUBLICATION, SPECIFICATIONS, ACCESSORIES, COLOR, MATERIAL, MODELS AND IMPROVEMENTS ARE SUBJECT TO CHANGE WITHOUT NOTICE. LIMITED WARRANTIES: SEE OWNERS MANUAL. ORDINARY MAINTENANCE ITEMS OR ADJUSTMENTS, PARTS SUBJECT TO NORMAL WEAR, AND OTHER CERTAIN ITEMS ARE EXCLUDED FROM WARRANTY. PROPOSITION 65 WARNING: THIS PRODUCT CONTAINS CHEMICALS KNOWN TO THE STATE OF CALIFORNIA TO CAUSE CANCER, BIRTH DEFECTS OR OTHER REPRODUCTIVE HARM. PROPOSITION 65 ADVERTENCIA: Este producto contiene sustancias químicas conocidas por el estado de California como causantes de cancer, anomalías congénitas y otros daños reproductivos.