

# Absolute Series

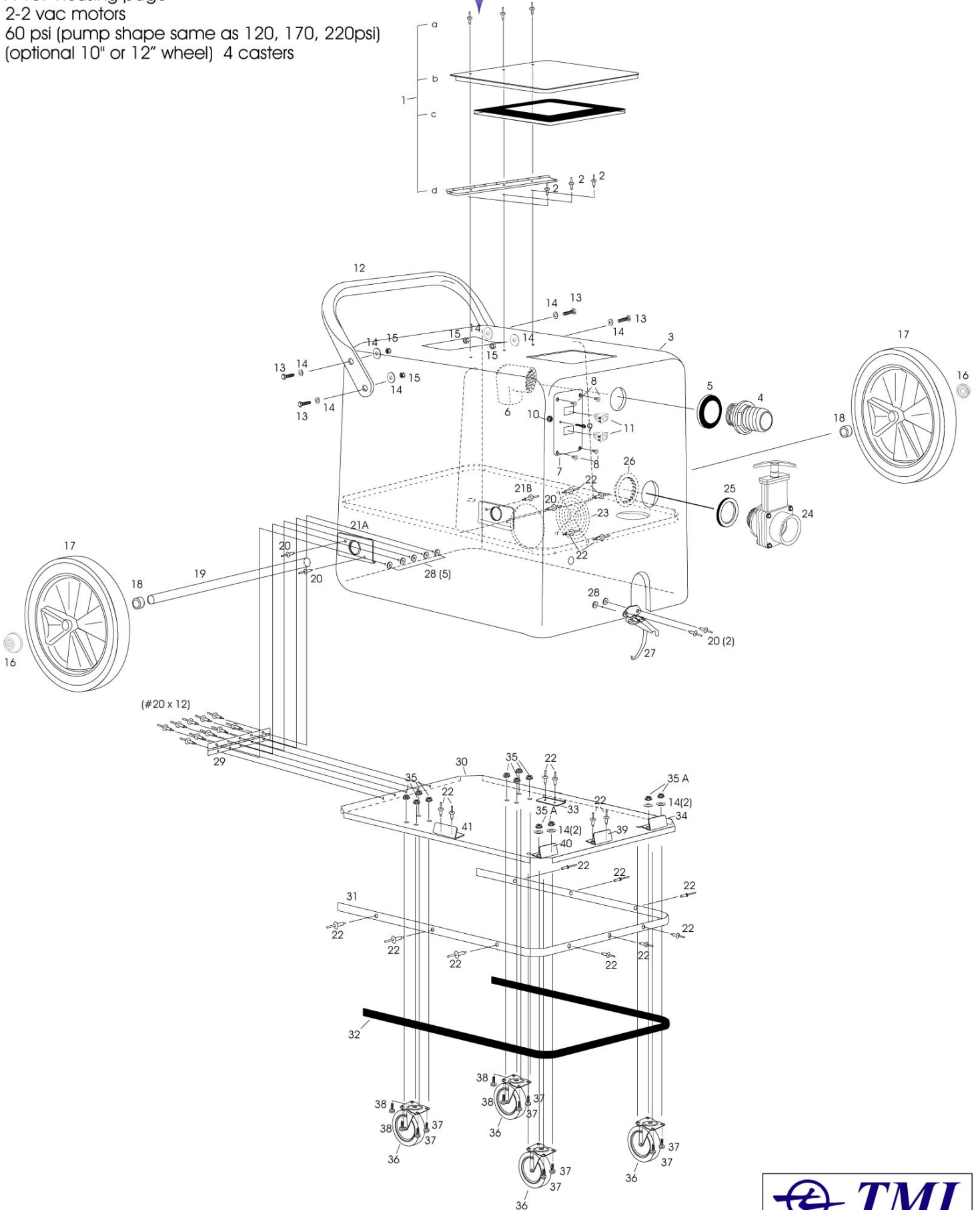
Since  
1974

A-107 housing page

2-2 vac motors

60 psi (pump shape same as 120, 170, 220psi)

(optional 10" or 12" wheel) 4 casters



NOTE: Schematic shown 4 casters or 10" or 12" wheels



082012

# Absolute Series

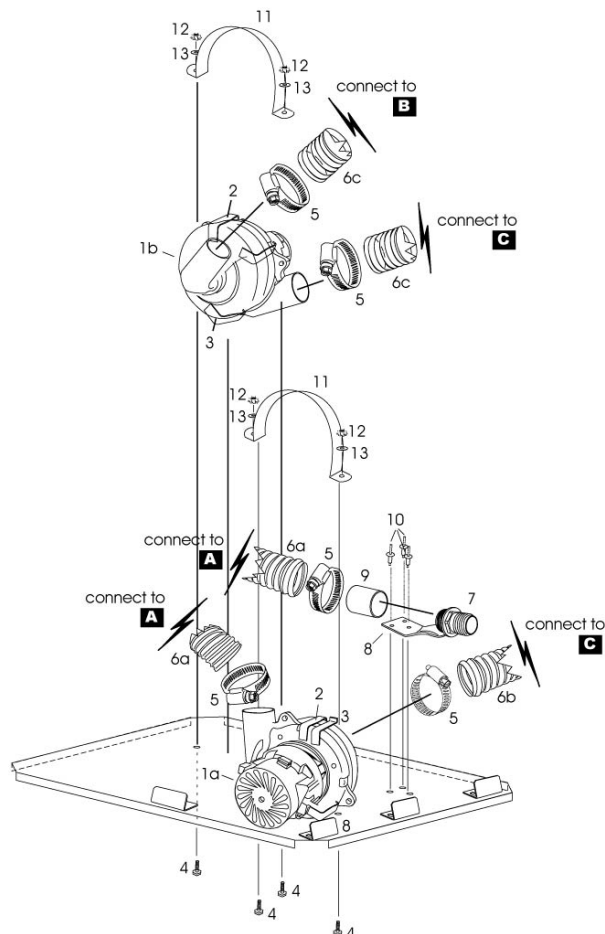
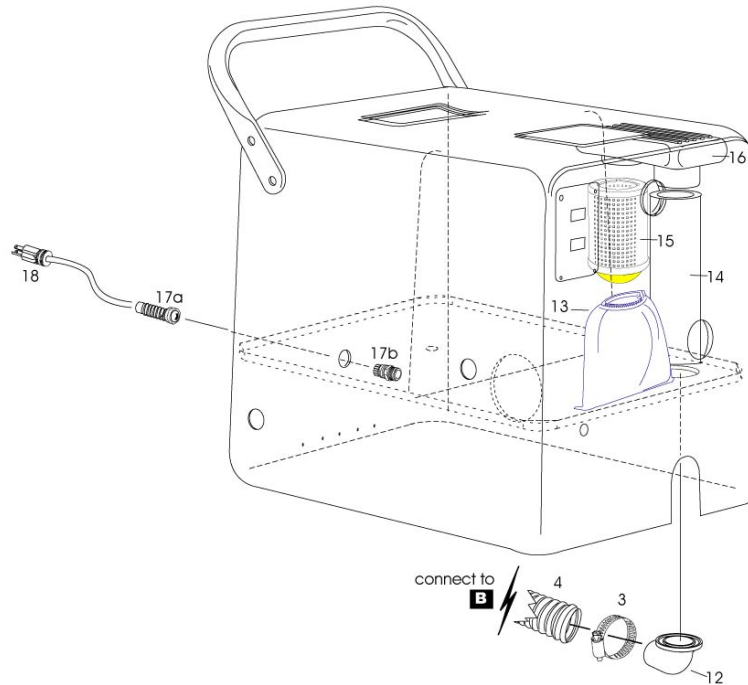
Since  
1974

A-107 vacuum motor page

2-2 vac motors

60 psi (pump shape same as 120, 170, 220psi)

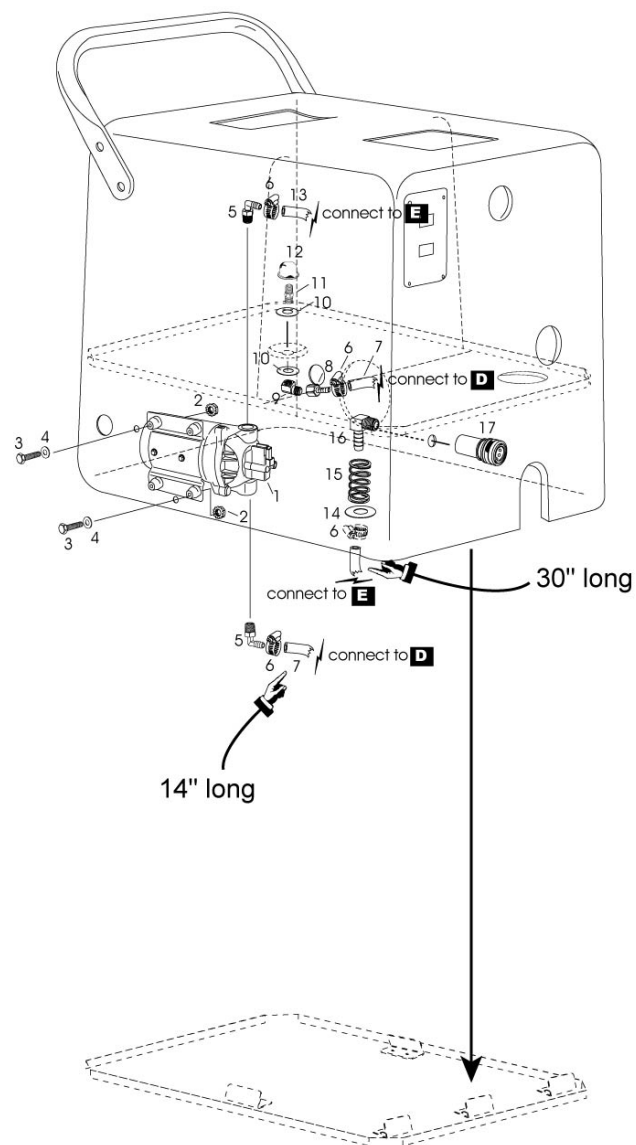
(optional 10" or 12" wheel) 4 casters



# Absolute Series

Since  
1974

A-107 pump page  
2-2 vac motors  
60 psi (pump shape same as 120, 170, 220psi)  
(optional 10" or 12" wheel) 4 casters



A-107  
Housing Page  
1-3stg Vac Motor  
60 PSI

ITEM No.	PARTS No.	QTY	DESCRIPTION
1	TMC20211	1	LID(S/S)COMP.STY.B9-1/4X10-1/2
A	FR01402	3	S/S 4-2 RIVET
B	TMC20232	1	LIDONLY(S/S)9-1/4X10-1/2X24G-B
C	TMC00222	1	LID GASKET ONLY 9X10-B
D	FS011080	1	S/S LID HINGE X 8"
2	FR01406	3	S/S 4-6 RIVET
3	TC1230##	1	FIBERGLASS H. #D 25X20X16
4	TB231516	1	1.5"HOSE BARB W/FLANGE BLACK
5	TB231601	1	1-1/2" X 1/8 GASKET(THIN)
6	TB231715	1	90DEG.ELBOW 1.5SPIG X 1.5FPT
7	TS21015	1	SWITCH PLATE W/2 SWITCH OPEN
8	FB1032008	4	10-32X1/2PH.FLAT HEAD ZN
9	FB1032003	1	10-32X3/8PH.PAN HEAD ZN
10	FN1021032	1	10X32 KEPS NUT ZINC
11	TE202012	2	CV/ON-OFF ROCKER SWITCH (TMI)
12	TB101220	1	STATIONARY HANDLE#A-F,H,K,M
13	FB021416	4	1/4-20X1 HEX BOLT 18-8 S/S
14	FW302400	10	1/4 U.S.S. CUT WASHER ZINC
15	FN1110420	4	1/4X20 S/S NYLON LOCK NUT
16	FS07108	2	1/2" AXLE (ROD) END CAP
17	WC161094	2	10X1.75X1/2"NONMARKIWHEEL80CAB
18	FW340816	2	1/2"ID.X1" SPACER(AXEL SPACER)
19	FS051026	1	AXLE(ROD)#A-E,G,K-5/8"X26"
20	FR03606	16	AL/ST 6-6 RIVET
21	TMA010102	1	RIGHT AXLE ALUM.BRACKET/10"-12"
B	TMA010101	1	LEFT AXLE ALUM.BRACKET/10"-12"
22	FR03604	19	AL/ST 6-4 RIVET
23	TE438134	1	COOLING FAN SCREEN
24	TB231151	1	1.5"BLACK 3PC.VALVE SPIG X MPT
25	TB231602	1	1-1/2" X 3/16GASKET(THICK)
26	TB231620	1	1-1/2LOCK NUT(JAM NUT)
27	FS05015	1	DRAW LATCH
28	FW302316	7	3/16 ALUM. RIVET WASHER AS6R
29	FS033110	1	ALUM. HINGE 11" #A,B,E,G,R(12"
30	TMB12402	1	2-5.7MOT,2CAS,12"WH./PNEU(B,D)
31	TG436545	1	ALUM. FLAT BUMPER GUARD54.5"
32	MD1055001	1	MOLDNG 5/8" BLCK/FT(5FT)
33	TP110421	1	LEFT SIDE ALIGNMENT BRACKET
34	TP110431	1	LEFT FRONT ALIGNMENT BRACKET
35	FN1020421	16	1/4X20 KEPS NUT
36	WC120263	4	3"X1"NON MARKING SWIVEL CAST.*
37	FB022412	4	1/4-20X3/4 HEX BOLT-ZINC
38	FB022408	10	1/4-20X1/2 HEX BOLT-ZINC
39	TP110437	1	FRONT CENTER ALIGNMENT BRACKET
40	TP110432	1	RIGHT FRONT ALIGNMENT BRACKET
41	TP110422	1	RIGHT SIDE ALIGNMENT BRACKET

A-107  
 Motor Page  
 1-3stg Vac Motor  
 60 PSI

ITEM No.	PARTS No.	QTY	DESCRIPTION
1	11660048-B/C	1	120V/5.7"3STG,143"/106CF/90DEG
2	TP400401	2	MOTOR CLAMP 5.7-2 STAGE MOTOR
3	TP400405	4	VAC STRAP GUARD
4	FB022416	4	1/4-20X1 HEX BOLT-ZINC
5	ID57320	5	1/2 SS BN,PLT, 1-9/16 TO 2-1/2
6	TV200294	-	2"WIRE BRA.INTERN.VAC.HOSE GRAY ( 18")
B	TV200294	-	2"WIRE BRA.INTERN.VAC.HOSE GRAY (11")
C	TV200294	-	2"WIRE BRA.INTERN.VAC.HOSE GRAY (19")
7	TB231516	1	1.5"HOSE BARB W/FLANGE BLACK
8	TP110411	1	EXHAUST BRACKET
9	TB2320120	1	WHITE TUBE 2" O.D. 10 FEET
10	FR03604	3	AL/ST 6-4 RIVET
11	TP200110	2	MOTOR STRAP FOR 5.7MOTORS(SM)
12	FN1020421	4	1/4X20 KEPS NUT
13	FW302424	4	1/4X1-1/4 ZINC FENDER WASHER
14	TB231720	1	2"90DEG.FLANGED ADAPTER
15	PM10150	1	VACUUM FILTER(BALL-FLOAT)
16	PM232084	1	STAND PIPE 2"O.D.#A,C(8-1/4")
17	PM10144	1	BALL FLOAT CAGE W/BALL
18	PM10142	1	BALL FLOAT DUCT ONLY
19	TE101500	1	CORD RETAINER (COMPLETE)
20	TE101143	1	14-3SJTW-A POW.CORDX25'W/15M.P

A-107  
PUMP PAGE  
1-3stg Vac Motor  
60 PSI

ITEM No.	PARTS No.	QTY	DESCRIPTION
1	S80532256	1	115V 60PSI/V/INT. 45PSI BYPASS
2	FN1020421	2	1/4X20 KEPS NUT
3	FB022424	2	1/4-20X1-1/2 HEX BOLT-ZINC
4	FW302400	2	1/4 U.S.S. CUT WASHER ZINC
5	N6MEB6	2	90DEG.H.B.3/8HOSEX3/8MPT WH.NY
6	ID62020	4	5/16 S/SBAND 1/4HEX HD.1/4-5/8
7	TH3630650	1	3/8I.D.250 WP1000 BP BLUE (14" Long)
8	126HBL44	1	HOSE BARB(HOSE X FPT)1/4X1/4
9	2202P44	1	90DEG.STREET ELBOW 1/4MPTX1/4F
10	FW3010820	2	1/2 S/S FLT WASHER 0.5X1.25X78
11	216P4	1	HEX CLOSE NIPPLE 1/4"
12	TF101050	1	FILTER SCREEN S/S 50MESH 1/4FT
13	TH3630650	1	3/8I.D.250 WP1000 BP BLUE (30" Long)
14	FW3020822	1	1/2X1-3/8 ZINC FENDER WASHER
15	FS091624	1	Q.C. MOUNTING SPRING
16	129HB44	1	90 DEG. HB (HOSE X MPT)1/4X1/4
17	BH2-6020	1	BRASS COUPLER 1/4"FPT -FST