

Whispper

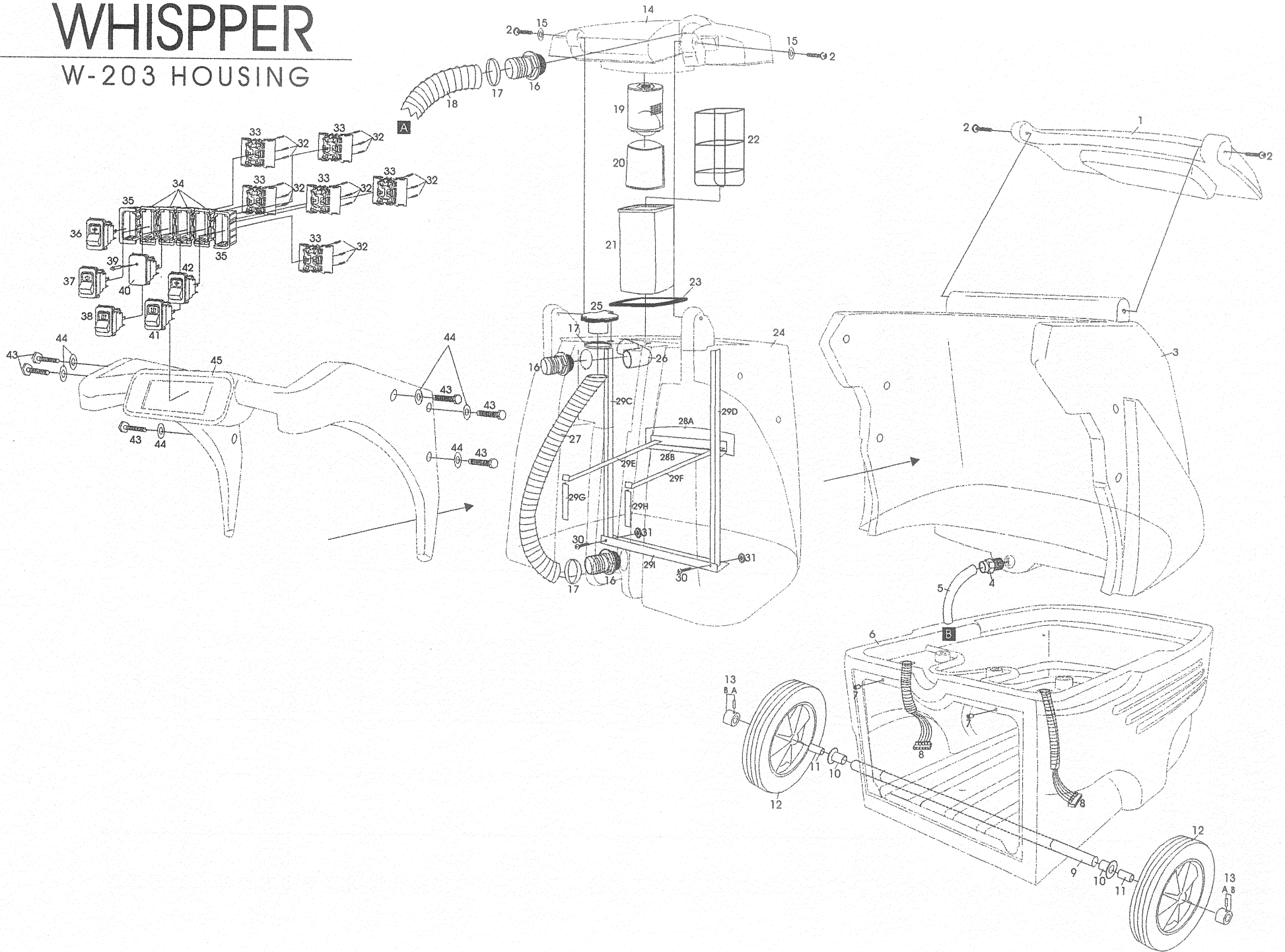
W-203

scan doc. with parts breakdown

total 05 pages
old ver

WHISPPER

W-203 HOUSING



WHISPPER

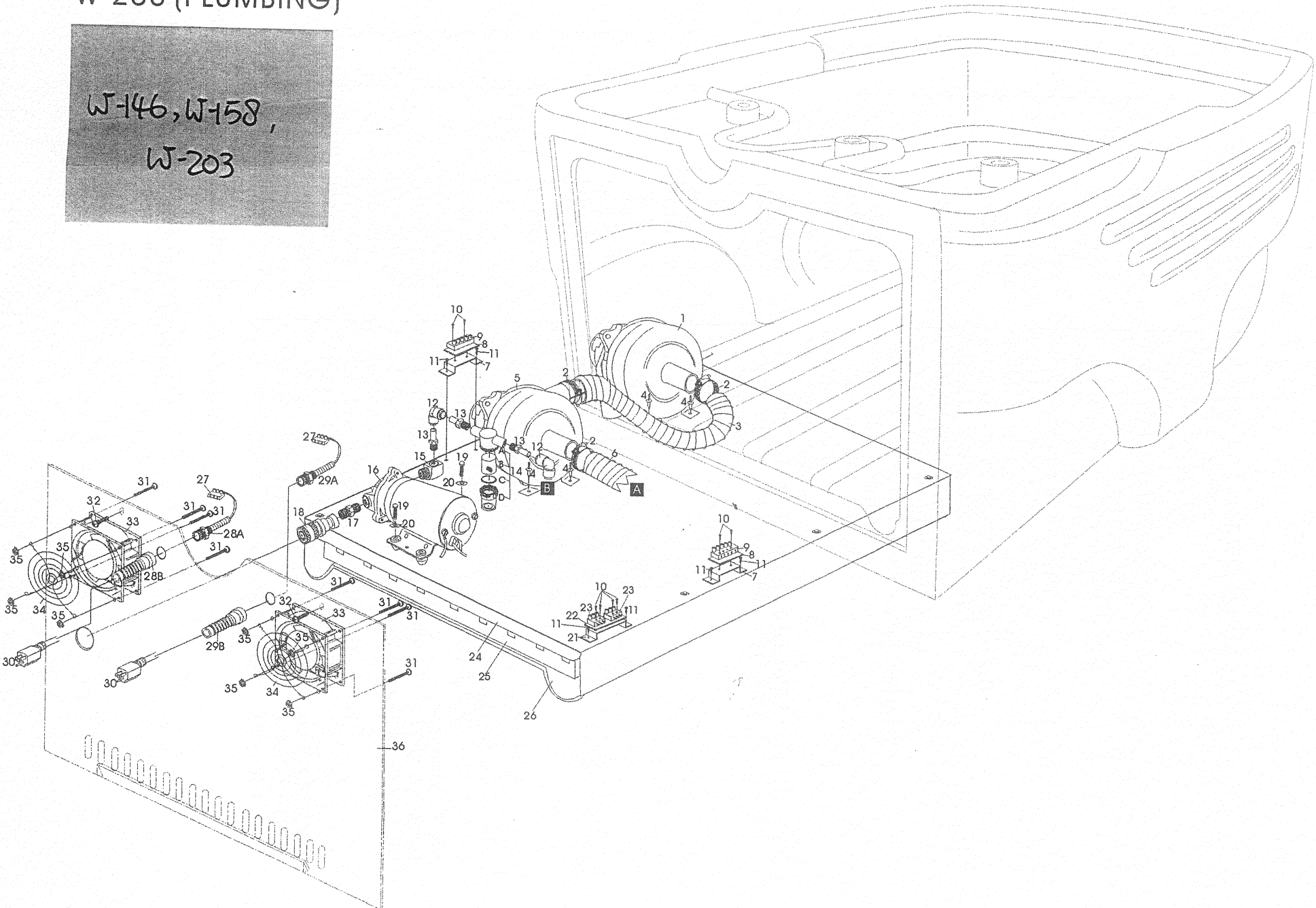
W-203 HOUSING

<u>ITEM NO.</u>	<u>QUANTITY</u>	<u>TMI PART NO.</u>	<u>DESCRIPTION</u>
1	1	TC131018	WHISPPER SOLUTION TANK LID
2	4	FB051324	10-32X1-1/2 PN PH BOLT S/S
3	1	TC131013	WHISPPER SOLUTION TANK
4	1	A8MC6	MALE CONNECTOR 1/2" X 3/8"
5	1	TH330650	3/8 I.D. 250 WP 1000 BP BLUE - TMI STANDARD
6	1	TC131017	WHISPPER BASE [MECH. DRAW AREA
7	2	AWS220	10-32 INSERT
8	2		WIRING SET FROM PANEL TO BASE
9	1	FS0508228	AXLE (ROD) #F-1/2" X 22.5"
10	2	MSB081401	1/2" X .0585" ENG. BEARING / FLANGE
11	2	FW340816	1/2" ID. X 1" SPACER (AXEL SPACER)
12	2	WC131099	10 X 1.75 X 1/2 SEMI PNEU. NON-MK WHEEL*
13A&B	2	FS07008	1/2" AXLR [ROD] HOLDER
14	1	TC131019	WHISPPER RICOVERY TANK LID
15	8	FW301300	S/S #10 FL WASHER
16	3	TB231516	1.5" HOSE BARB W / FLANGE BLACK
17	3	ID72049	LOW PROFILE CLAMP 1-3/4 ZINC P
18	1	TV150201	1.5"CLEAR WR VAC HOSE
19	1	PM10144	BALL FLOAT CAGE W/BALL
20	1	PM10150	VACUUM FILTER (BALL-FLOAT)
21	1	PM20250	WHISPPER DRY VAC.FILTER
22	1	TP620015	WHISPPER DRY FILTER INNER FRAM
23	1	PM20251	DRY VAC. FILTER OUTER RIM FOR WHISPPER
24	1	TC131015	WHISPPER RECOVERY TANK
25	1	TP531250	1.5" DRAIN VALVE COMP BEL-WH
26	1	TB231715	90DEG. ELBOW 1.5" SPING X 1.5" FPT
27	1	TV150201	1.5"CLEAR WR VAC HOSE
28A&B	1	TP225300	SWHISPPER RECOVERY TANK INNER SUPPORT
29 E - I	1	TP225300	SWHISPPER RECOVERY TANK INNER SUPPORT
30	2	FB032408	10-32 X 1/2" PH PAN HEAD S/S
31	2	FN1011032	10 X 32 S/S KEPS NUT
32	18	TE202541	PK FEMALE TERMINAL (USE WITH TE202511)
33	6	TE202511	SWITCH WIRE CONNECTOR
34	4	TE202514	GANG MOUNT CENTER
35	2	TE202513	GANG MOUNT END
36	1	TE202510	ROCKER SWITCH 115V AC WHISPPER
37	1	TE202510	ROCKER SWITCH 115V AC WHISPPER
38	1	TE202510	ROCKER SWITCH 115V AC WHISPPER
39	1	TE210112	LED 2 CIRCUIT INDICATING LIGHT
40	1	TE202512	PANEL PLUG
41	1	TE202510	ROCKER SWITCH 115V AC WHISPPER
42	1	TE202510	ROCKER SWITCH 115V AC WHISPPER
43	2	FB052444	1/4-20 X 2-3/4" HEX CAP GR5 BOLT ZINC
43	2	FB052456	1/4-20 X 3-1/2" HEX CAP GR5 BOLT ZINC
43	2	FB052440	1/4-20 X 2-1/2" HEX CAP GR5 BOLT ZINC
44	6	FW3020450	1/4 SAE WASHER PLT
45	1	TC131020	WHISPPER HANDLE

WHISPPER

W-203 (PLUMBING)

W-146, W-158,
W-203



WHISPPER

W-146, W-158, W-203 (PLUMBING)

ITEM NO.	UANTIT	TMI PART NO.	DESCRIPTION	
1	1	11941213-A/C	2 STG. MOTOR (5.7) W/ADAP & CLAMP	FOR MODEL W-146
1	1	11620700-A/C	2 STG VAC.MOTOR W/ADAP.& CLAMP	FOR MODEL W-158
1	1	11676500-A/C	5.7 3 STAG. VAC W/AD.& CLAMPS INS	FOR MODEL W-203
2	3	ID57320	1/2 S/S BN, PLT, 1-9/16 TO 2-1/2	
3	1	TV200294	2" WIRE BRA. INTERN. VAC.HOSE GRA. (" long)	
4	4	FR03604	AL/ST 6/4 RIVET	
5	1	11941213-C/C	2 STG. MOTOR (5.7) W/1.5"ST.ADAP&CLAMP	FOR MODEL W-146
5	1	11620700-C/C	2 STG VAC.MOTOR W/1.5"STR.ADAP.	FOR MODEL W-158
5	1	11676500-C/C	5.7 3 STAG. VAC W/1.5 ST. ADAPT	FOR MODEL W-203
6	1	TV200294	2" WIRE BRA. INTERN. VAC.HOSE GRA. (" long)	
7	2		1.5"X1.5 ALUM.BRACKET FOR CORD TERM.PLUG	
8	2		1.5" X 1.5" BLACK PLASTIC INSULATOR	
9	2	TE321SDS-05	TERMINAL BLOCK W/5 PLUGS	
10	8		6-20 X 1" ZINC PHILLIPS SCREW	
11	6	FR03604	AL/ST 6/4 RIVET	
12	2	A8EU8	ELBOW UNION 90 DEG. TUB. X 1/2	
13	3	A8TMC4	TEBE STEM ADAPTER 1/2 TUBE X 1/4 MPT	
14	1	TF105110	LINE FILTER 1/4" FPT MID SIZE	
	A	1	TF105013	BODY
	B	1	TF105016	SCREEN-80 MESH
	C	1	TF105014	GASKET FOR LINE FILTER
	D	1	TF105015	BOWL (CLEAR)
15	2	2202P66	90 DEG. STREET ELBOW 3/8 MPT X 3/8 FPT	
16	1	S80812288	115V. 100PSI P / VITON / INT. 80 PSI BYPASS	
17	1	216P4	HEX CLOSE NIPPLE 1/4	
18	1	BH2-6000	BRASS COUPLER 1/4 FPT	
19	2	FB024412	1/4 - 20 X 3/4 HEX BOLT ZINC	
20	2	FW302400	1/4 U.S.S CUT WASHER ZINC	
21	1		1.5" X 2" ALUM.BRACKET FOR CORD TERM.PLUG	
22	1		1.5" X 2" BLACK PLASTIC INSULATOR	
23	2	TE321SDS-03	TERMINAL BLOCK W/3 PLUGS	
24	1		COVER FOR MUFFLING SYSTEM	
25	1	TMB00110	WHISPPER BASE MUFFLER FOAM INSERT	
26	1	TMB321100	WHISP. BASE 3-5.1 2STG MOT 100P	
27	2	TE321BDS-03	TERMINAL BLOCK W/3 SOCKETS	
28A&B	1	TE101500	CORD RETAINER (COMPLETE)	
29A&B	1	TE101500	CORD RETAINER (COMPLETE)	
30	2	TE101143	14-3SJTW-A POW.CORD X 25' W/15M.P	
31	8	FB032422	10-32 X 1-3/8PH. PAN HEAD S/S	
32	2	FB103212	10-32X3/4 PH.PAN HEAD ZN	
33	2	TE436111	COOLING FAN 120V 3.5"	
34	2	TE438134	COOLING FAN SCREEN	
35	8	FN1011032	10X32 S/S KEPS NUT	
36	1	TP223100	WHISPPER STANDARD BACK PANEL	