

Rebel^{series}

SOFT SURFACE



1-310-323-1134

www.timbucktoomfg.com

www.tmiusa.net

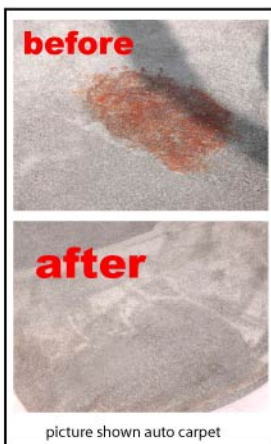
A commercial compact carpet extractor with 4.5 gallon solution tank and 4 gallon recovery tank. Constructed with heavy duty fiber composite body, stainless steel lid and handle. This extractor is designed for removing spots, upholstery, carpet cleaning, and auto detail business.

Manufacturer of commercial & environmental cleaning equipment

© 2011 TIMBUCKTOO MFG., INC.

Specifications: (R-931)

- ~ heavy duty fiber composite body
- ~ one 2 stage vacuum motor
- ~ 82" suction power (H2O)
- ~ air flow 97 (cfm)
- ~ 60 PSI pump
- ~ flow rate 1.4 (gpm)
- ~ 120 volt AC with 7 amperes (MAX 10 amp.)
- ~ 4.5 gallon solution tank and 4 gallon recovery tank
- ~ easy access to all mechanical components
- ~ exterior dimension H 23" x W 14" x L 24"
- ~ 10' vacuum hose and 10' solution hose
- ~ one 25' 14-3 cord
- ~ 1 jet 12" Auto-Seal Wand
(heavy duty self adjustable suction angle head with adjustable stainless steel grip handle)
(patent no. D455,532S)
- ~ stainless steel lid
- ~ 4 / 2" non-marking casters
- ~ shipping weight 75lb. +



picture shown with optional stationary handle.



picture shown with optional long stationary handle.



picture shown with optional electric instant water heater with stainless steel wand

Options:

- ~ 100, 150 PSI pumps
- ~ stationary handle
- ~ long stationary handle
- ~ ground fault circuit interrupter
- ~ 3" non-marking swivel caster
- ~ hour meter
- ~ acoustic muffling system
- ~ additional vacuum power or different type of vacuum motors available
- ~ Auto-Seal See Through Wand
- ~ Auto-Seal Double Bend Wand
- ~ Auto-Seal See Through Double Bend Wand
- ~ other type of tools and accessories available
- ~ electric instant water heater (pressure up to 500psi)

standard color: blue, red, grey

CAUTION: Do not use flammable and volatile material.

SPECIFICATIONS, FEATURES, ILLUSTRATIONS AND EQUIPMENT SHOWN IN THE CATALOG ARE BASED UPON THE LATEST INFORMATION AT THE TIME OF PUBLICATION. ALTHOUGH DESCRIPTIONS ARE BELIEVED TO BE CORRECT AT THE TIME OF PUBLICATION, SPECIFICATIONS, ACCESSORIES, COLOR, MATERIAL, MODELS AND IMPROVEMENTS ARE SUBJECT TO CHANGE WITHOUT NOTICE. LIMITED WARRANTIES: SEE OWNERS MANUAL. ORDINARY MAINTENANCE ITEMS OR ADJUSTMENTS, PARTS SUBJECT TO NORMAL WEAR, AND OTHER CERTAIN ITEMS ARE EXCLUDED FROM WARRANTY.