

Hydro-Blade

HARD SURFACE ATTACHMENT series



1-310-323-1134

www.timbucktoomfg.com

www.tmiusa.net

Hydro-Blade is designed to clean quickly and maintain any hard surface, such as V.C.T. and tile floors with or without grout joints, granite, marble, concrete, cement, irregular surfaces, and a lot more. Hydro-Blade is designed to drive (driving forward) pressure directly into the soiled surface. Other machines push away from it to move their arm. The reason for driving forward is we install an electric motor to drive the hi-pressure arm & jets forward into the dirt at a constant 1000 RPMS.

Manufacturer of commercial & environmental cleaning equipment

© 2011 TIMBUCKTOO MFG., INC.

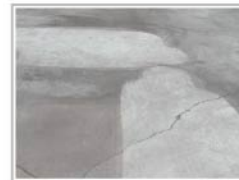
Specifications: (HB-2519A-SQW)

- ~ rotationally molded polyethylene & stainless steel body
- ~ 0-5000 psi pump can be used
- ~ over all length 46"
- ~ base width oval 22" x 19" to 25" x 19" (with squeegee wings)
- ~ base height 5-3/4"
- ~ shipping weight 55 Lb. + (varied upon different model)
- ~ stainless steel jets
- ~ stainless steel with ceramic rotation fitting
- ~ comfortable pistol grips on handle assembly (the grips provide ease when working long hours)
- ~ 4 x multi-directional outdoor and uneven surface wheels
- ~ bristle skirts & squeegee blades 360 degree
- ~ limited warranty 3 years on poly body, 1 year parts & 90 days labor

F.A.S.T.TM
Forward
Ankle
spraying
TechnologyTM



picture shown the Hydor-Blade 19" 0-5000 psi with optional W-1500



picture shown before and after using with Hydro-Blade hard surface cleaning

Options:

- ~ without motor

New
Technology
 for
Hard
Surface
cleaning

picture shown Hydor-Blade 19" 0-5000 psi with optional pressure washer



standard color: grey granite



picture shown the Hydor-Blade 19" 0-5000 psi

CAUTION: Do not use flammable and volatile material.

SPECIFICATIONS, FEATURES, ILLUSTRATIONS AND EQUIPMENT SHOWN IN THE CATALOG ARE BASED UPON THE LATEST INFORMATION AT THE TIME OF PUBLICATION. ALTHOUGH DESCRIPTIONS ARE BELIEVED TO BE CORRECT AT THE TIME OF PUBLICATION, SPECIFICATIONS, ACCESSORIES, COLOR, MATERIAL, MODELS AND IMPROVEMENTS ARE SUBJECT TO CHANGE WITHOUT NOTICE. LIMITED WARRANTIES: SEE OWNERS MANUAL. ORDINARY MAINTENANCE ITEMS OR ADJUSTMENTS, PARTS SUBJECT TO NORMAL WEAR, AND OTHER CERTAIN ITEMS ARE EXCLUDED FROM WARRANTY.